

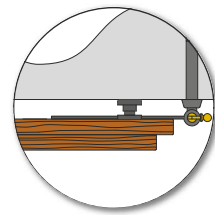
Descrizione Description	Articolo Product code	Finiture Finishes			Misure mm Measures mm										Packaging			Note	
		B9	B0	N1	A	A2	B	C	Ø	D	Z					U.M.	Pack		Kg
Modello / Model <b>Paracolpi a molla</b> Shock-absorber with spring	<b>FBC 02150 00</b>			●												pcs	20	0,4	
Modello / Model <b>Spessore per paracolpi*</b> Thickness for shock-absorber*	<b>FBC 2150S 00</b>			●			10			30						pcs	20	0,3	
Modello / Model <b>Pinza blocca ante</b> Shutter stop clips	<b>FFP 00104 00</b>			●	44	32					16					pcs	50	0,6	
Modello / Model <b>Spessori</b> Shims	mm 10 <b>FFP 00104 D0</b>			●	44	32	10									pcs	50	0,7	
Modello / Model <b>Pozzetto antipolvere</b> Anti dust cylinder with spring	Ø 6 <b>FAP 00784 06</b> Ø 8 <b>FAP 00784 08</b> Ø 10 <b>FAP 00784 10</b> Ø 12 <b>FAP 00784 12</b> Ø 14 <b>FAP 00784 14</b> Ø 16 <b>FAP 00784 16</b> Ø 18 <b>FAP 00784 18</b> Ø 20 <b>FAP 00784 20</b> Ø 22 <b>FAP 00784 22</b>	○ ○ ○ ○ ○ ○ ○ ○ ○	● ● ● ● ● ● ● ● ●		10 12 14 16 18 20 22 24 26						6 8 10 12 14 16 18 20 22				pcs pcs pcs pcs pcs pcs pcs pcs pcs	100 100 100 100 100 100 100 100 100	1,0 1,4 1,6 1,8 2,0 2,6 3,5 2,4 3,0		



Modello / Model  
**Paracolpi a molla**  
Shock-absorber with spring



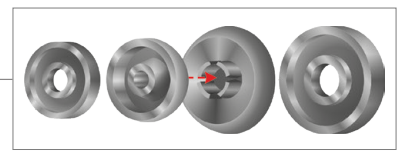
Modello / Model  
**Spessore per paracolpi**  
Thickness for shock-absorber



Il paracolpi a molla è incluso nella confezione dei cardini con dispositivo fermapersiana shock-absorber are included in the pivots with shutter-holder device package



Modello / Model  
**Pinza blocca ante**  
Shutter stop clips



Modello / Model  
**Spessori per pinza blocca ante**  
Shims for shutter stop clips



SPessori SOVRAPPONIBILI  
STACKABLE SHIMS



Versione ottone naturale  
Brass version



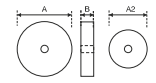
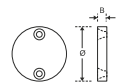
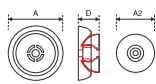
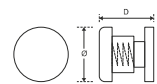
Versione ottone nichelato  
Brass nickel version

Modello / Model  
**Pozzetto antipolvere**  
Antidust pit with spring

Dimensioni /  
Dimensions available  
Ø 6  
Ø 8  
Ø 10  
Ø 12  
Ø 14  
Ø 16  
Ø 18  
Ø 20  
Ø 22



Il pozzetto a molla può essere usato per l'applicazione di catenacci con puntale  
Antidust pit can be used combining with the round head locking bolt



- = N1 nylon nero  
black nylon
- = B0 ottone naturale  
natural brass
- = B9 ottone nichelato  
nickel brass