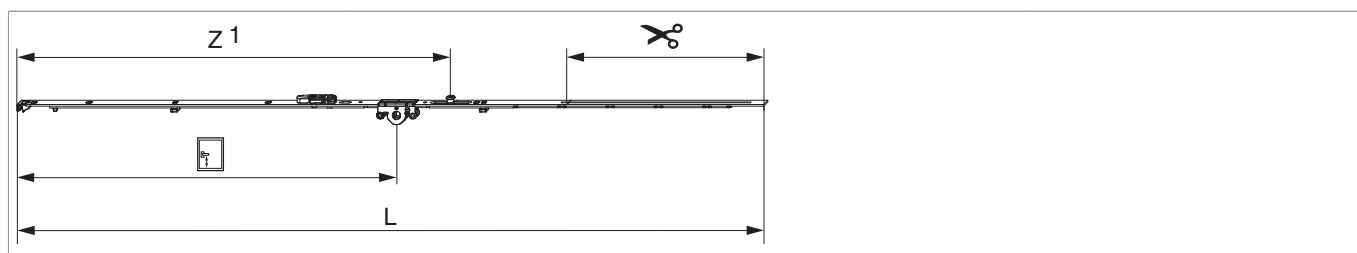










## 217868 - Cremonese Multi Matic 1340 E15 fix con 1 fungo HBB 1.091-1.340 HM400 argento

### Disegni tecnici



		<b>L</b>							<b>Nº</b>
argento	1340	1.236,5	15	400	1.091 - 1.340	260,5	1	10	<a href="#">217868</a>


### Tabella posizionamento viti

<b>Nº</b>		1	2	3	4	5	6	7	8	9	
<a href="#">217868</a>	7	18,5	91,5	228,5	474	595	685	868,5			

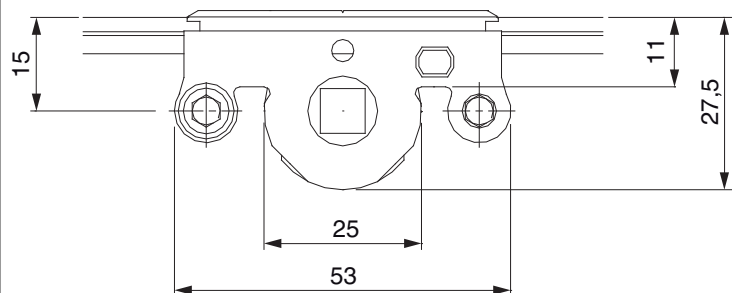
### Tabella punti di chiusura

<b>Nº</b>		Z1	Z2	
<a href="#">217868</a>	1	640		

### Dime

			<b>Nº</b>
Dima forature per fori martellina MM	per punta 3mm	1	<a href="#">203861</a>
Dima forature per fori martellina MM	per punta D=3 mm e D=12 mm	1	<a href="#">203862</a>

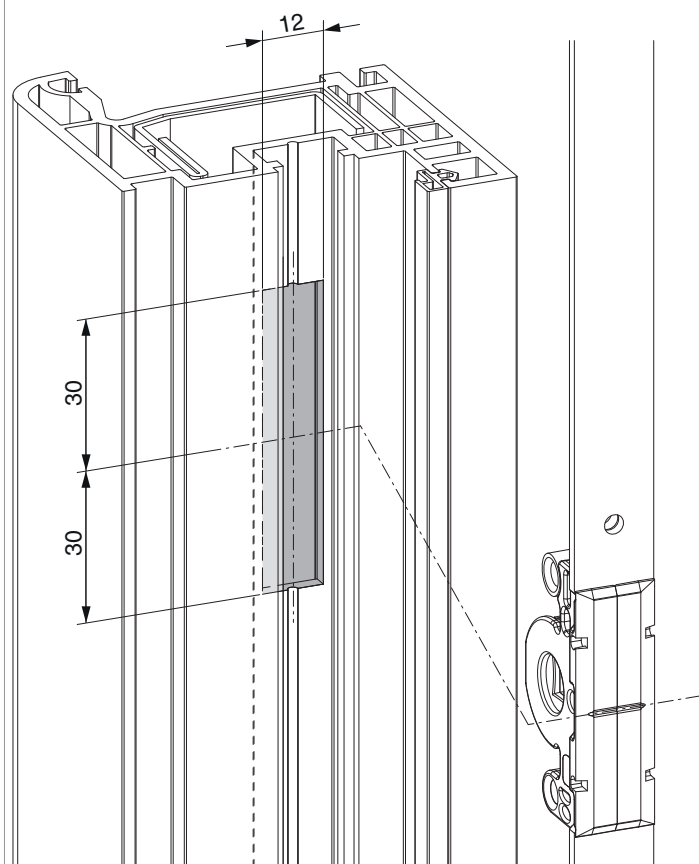
### Quote della scatola cremonese



- Larghezza fresata per scatola cremonese 12 mm
- Per fissaggio maniglia utilizzare viti SPAX Ø 5 mm o viti M5.

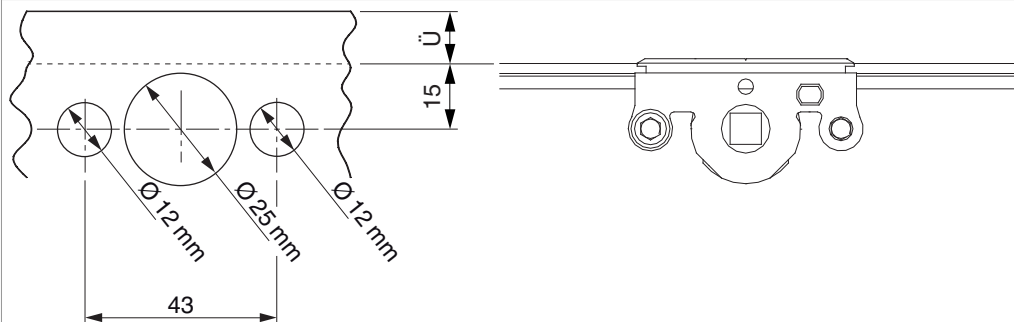
### Schema di fresata

per PVC e alluminio

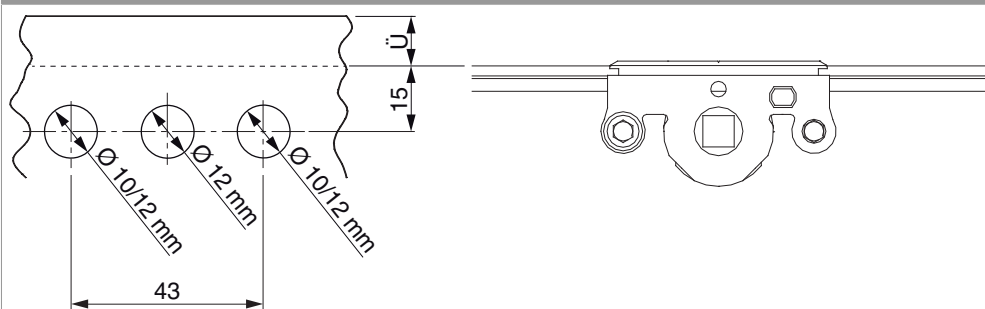


## Schema di foratura

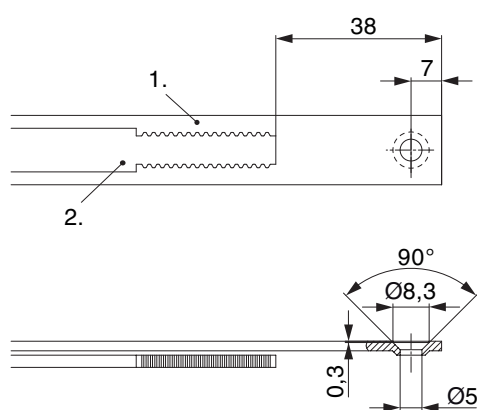
Per serramenti in legno



Per serramenti in PVC e alluminio



## Schema di tranciatura

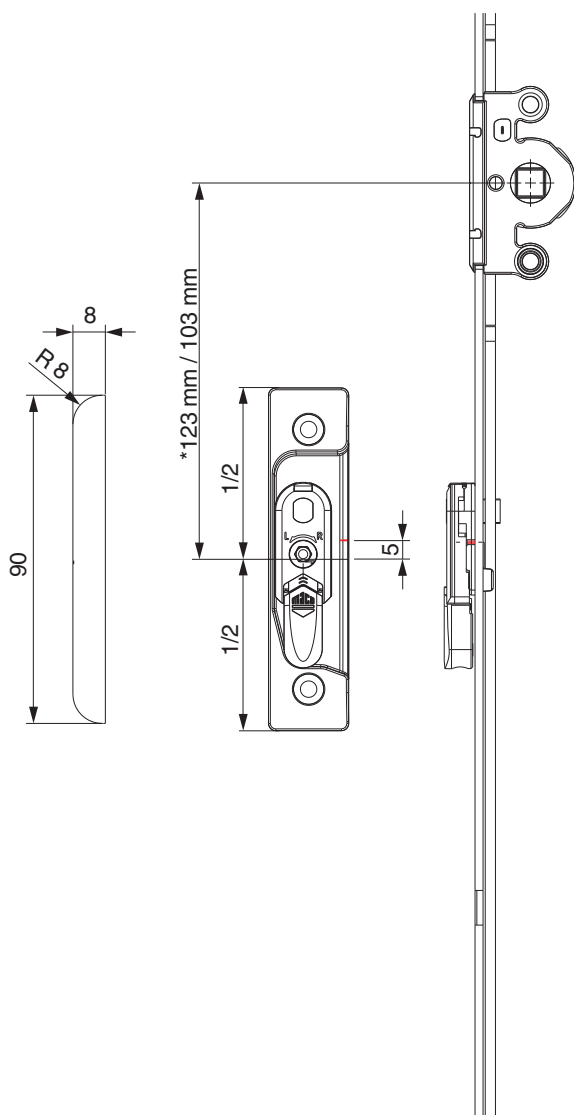


• Consigliamo di trattare il taglio dei componenti TRICOAT-PLUS con la vernice di ritocco TRICOAT-PLUS (cod. 358440).

1. Frontale  
2. Asta mobile

## Posizionamento scontri alza anta

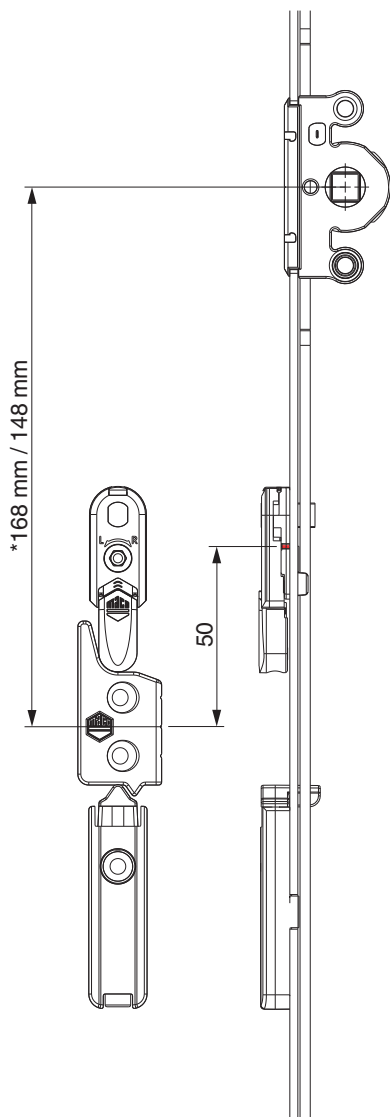
Scontro alza-anta A4 / senza scrocco porta



\* con cremonesi grandezza 660

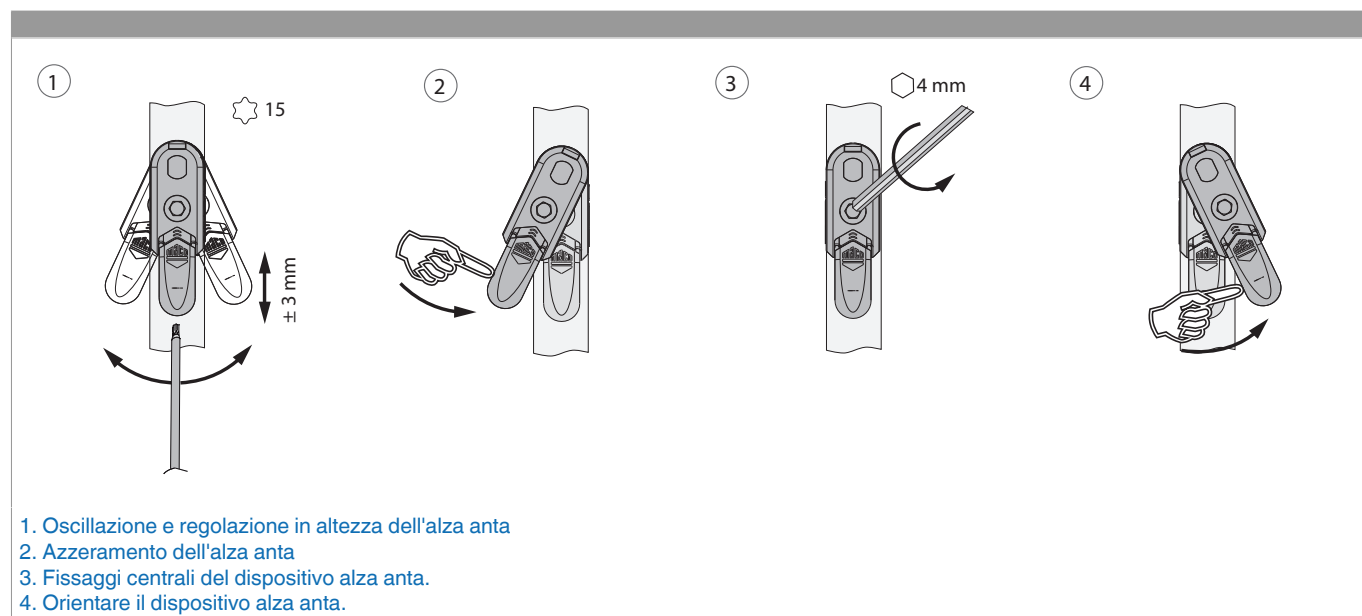


A12

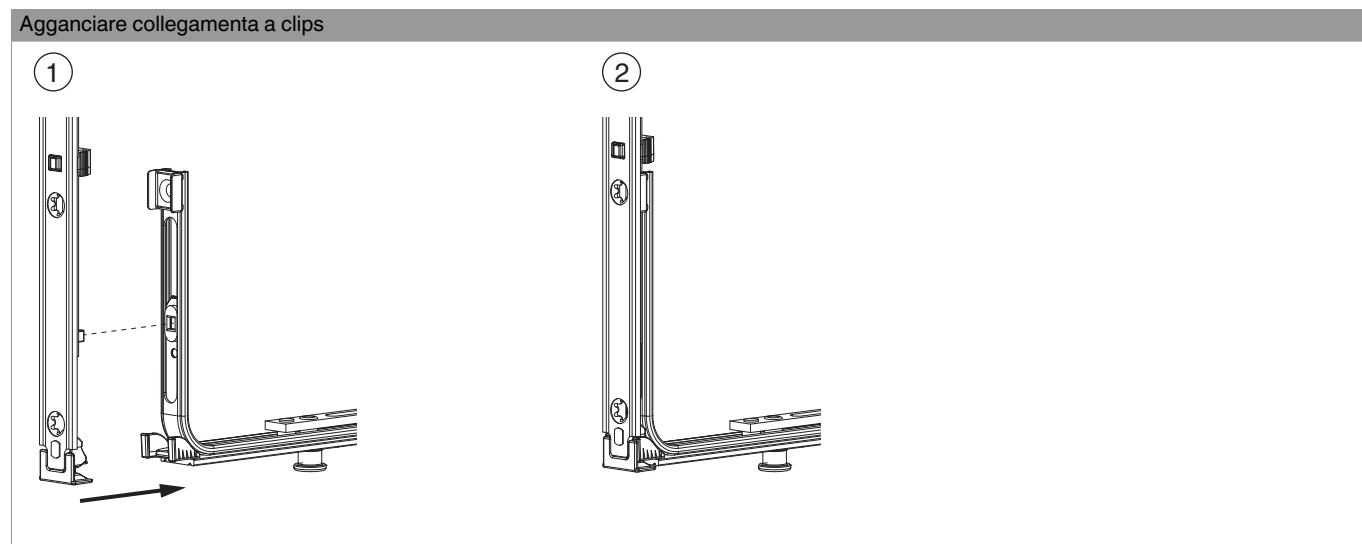


\* con cremonesi grandezza 660

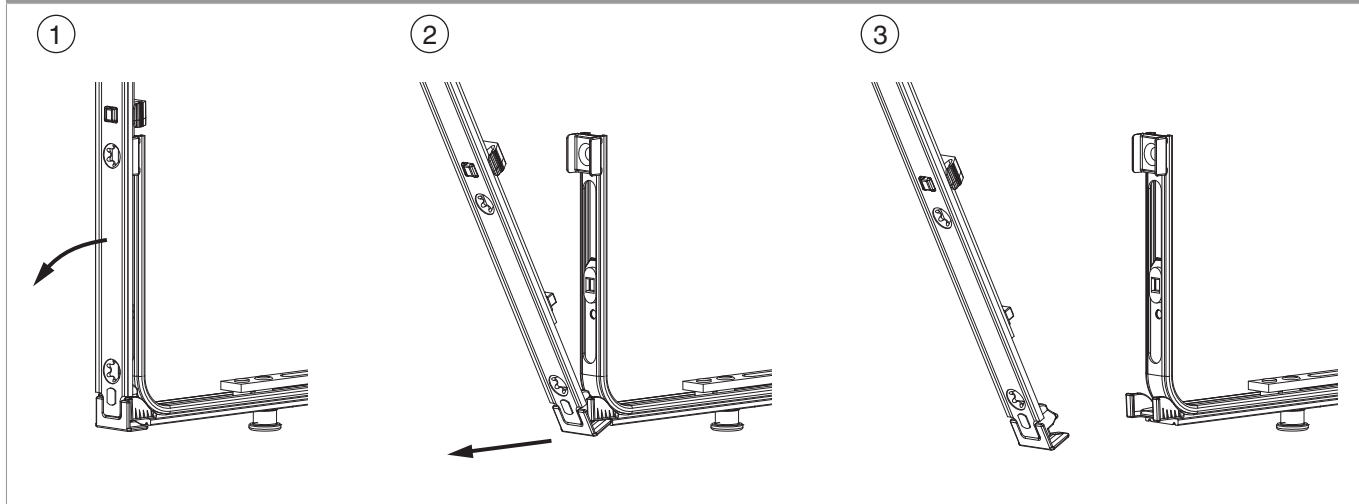
## Oscillazione e regolazione in altezza dell'alza anta



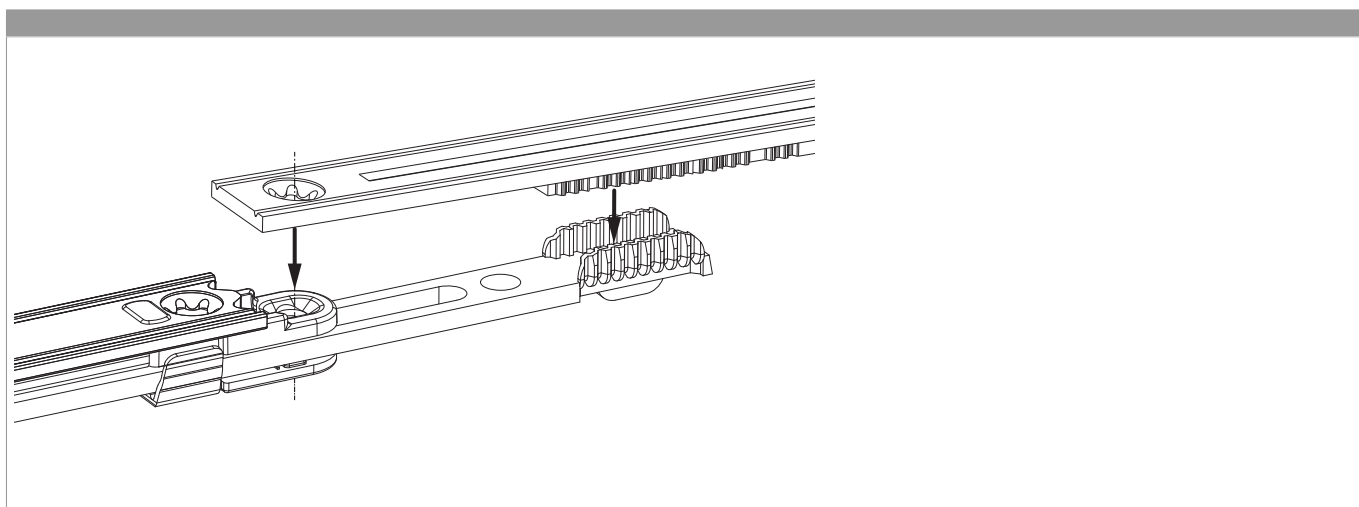
## Collegamento a clips



Sganciare collegamento clips



Collegamento scarpetta dentata



## Regolazione pressione

Fungo e nottolino

