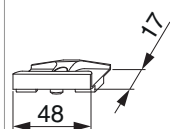




34937 - Scontro nottolino con perno di posizionamento 12x3 mm per canalino euro 7/8x4 con vite inclinata argento

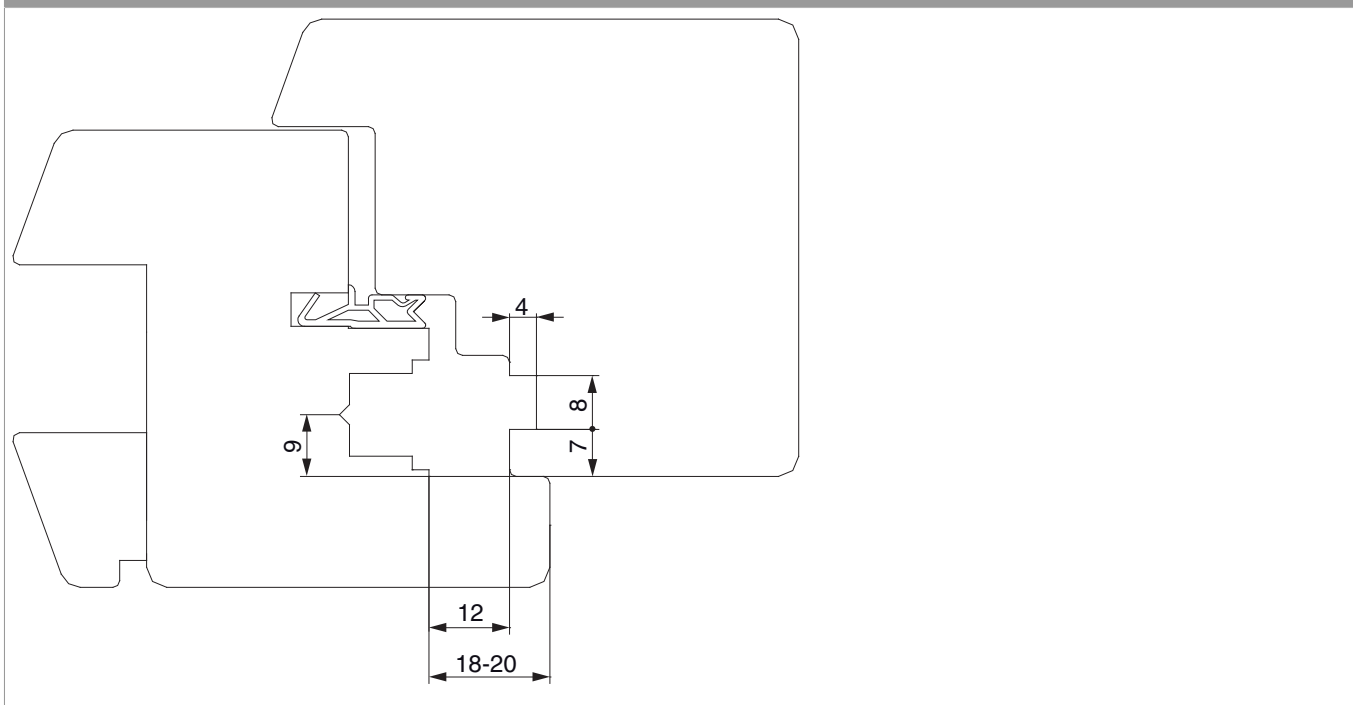
Disegni tecnici



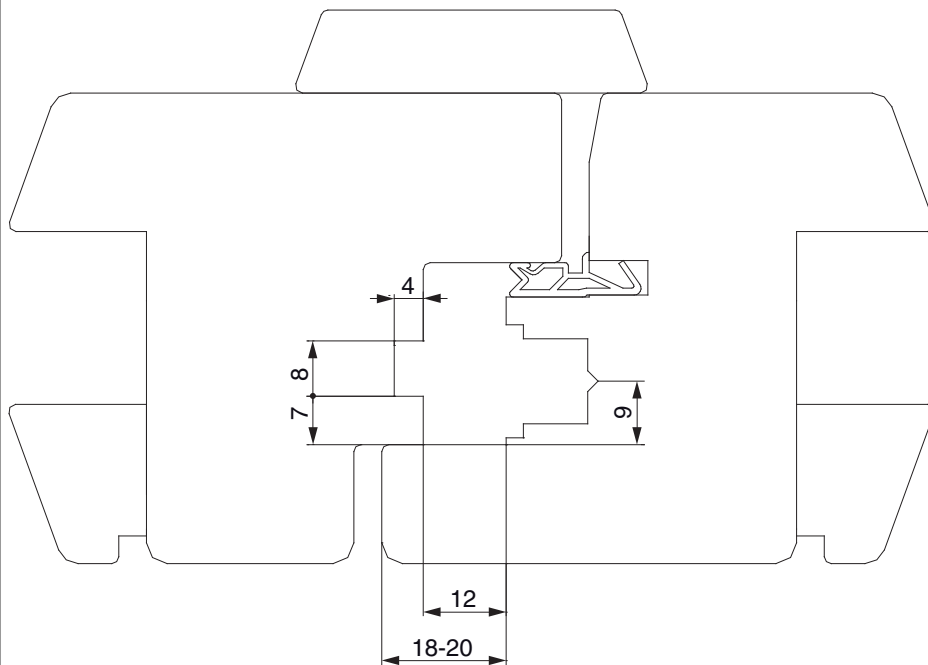
		L	B	H		Nº
argento	con vite inclinata	48	17	9	200	34937

Sezioni profilo

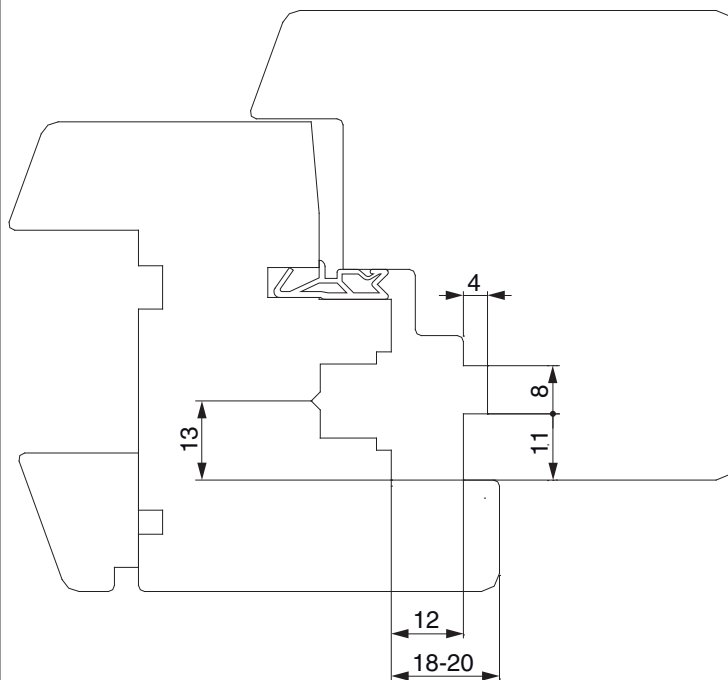
A12 Euronut 7/8/4 - 1 anta



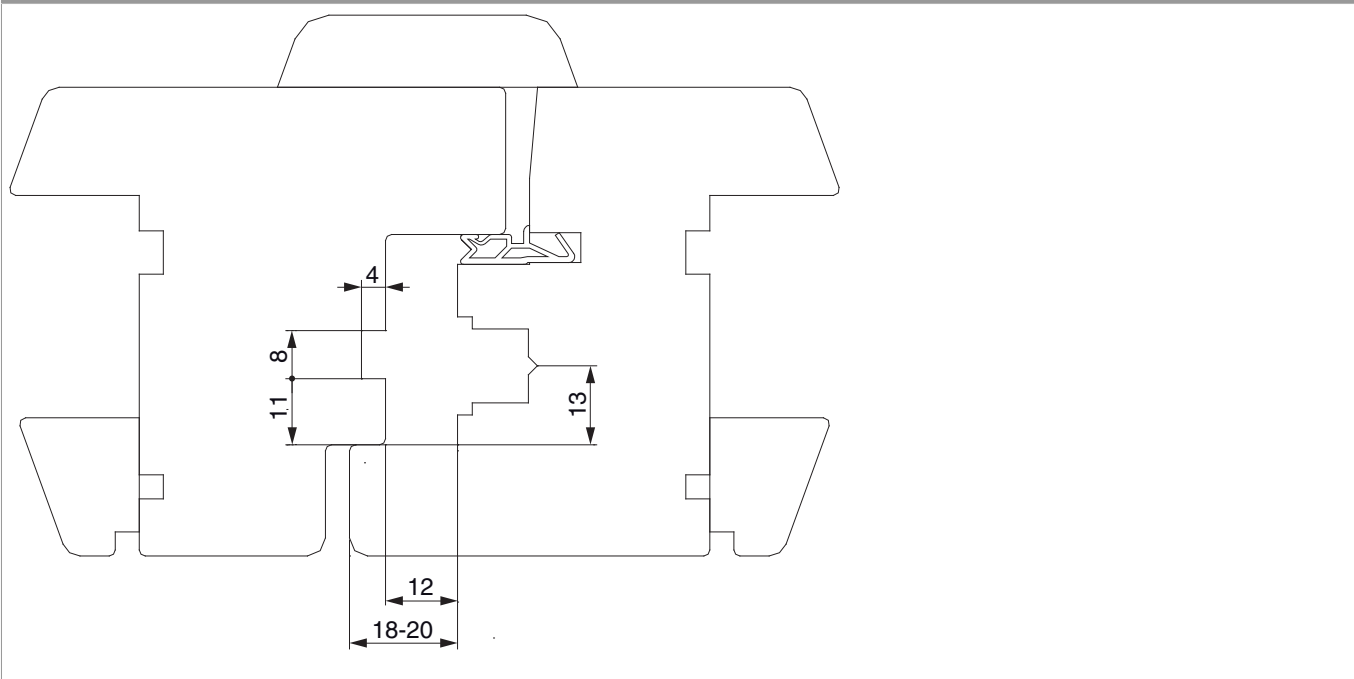
A12 Euronut 7/8/4 - 2 ante



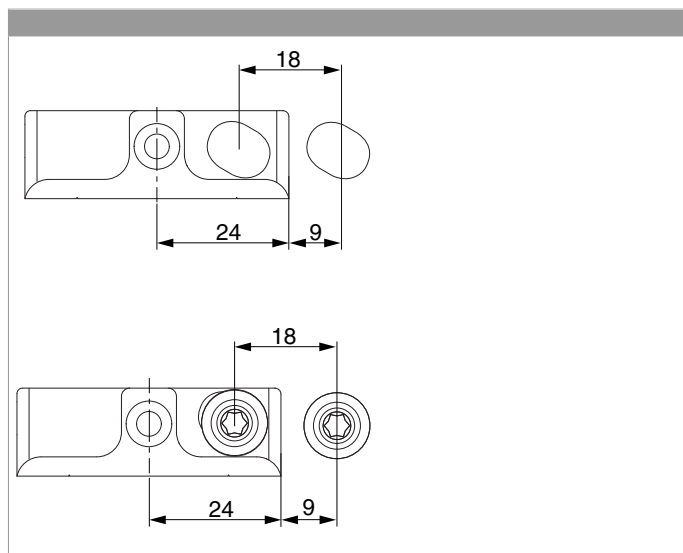
Costruzione alternativa della finestra 1 anta



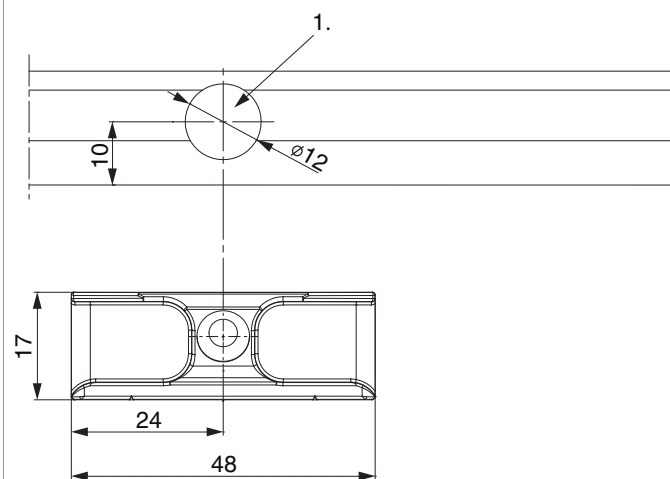
Costruzione alternativa della finestra 2 ante



Posizionamento degli scontri



Schema di foratura



1. Profondità foratura 4 mm